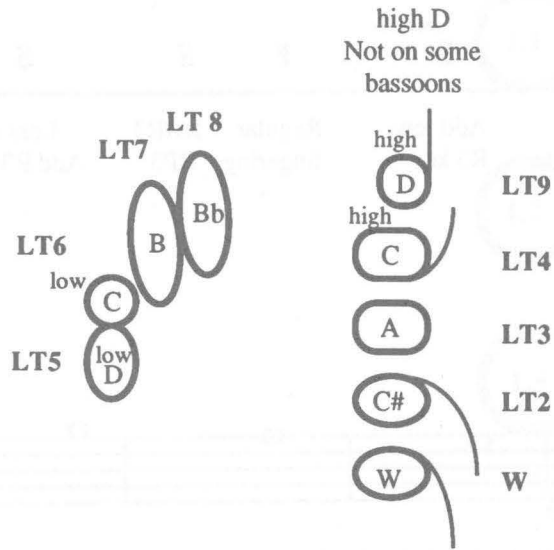


Bassoon

Back

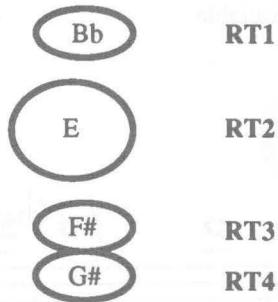
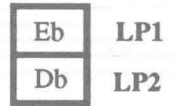
Front



1

2

3

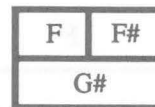


4

5

6 G

RP1



RP2

RP3

(Trill keys not needed for basic fingerings are not included)

Pitch Tendencies & Adjustments

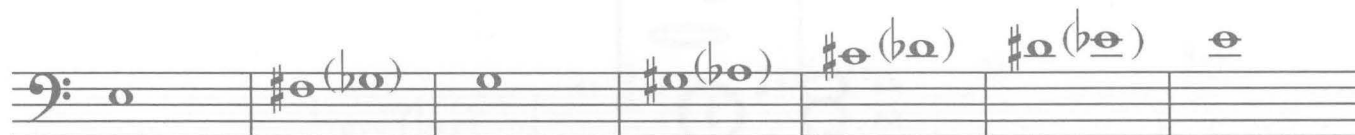
Bassoon

F = Flat
S = Sharp
V = Very
1/2H = Half hole

(Notes not addressed are generally acceptable)



Pitch Tendency	S	F or S	F or S	F or S	F
Adjustment	No alternate exists Drop jaw, open throat Check on adding tuning ring, if extremely sharp	Could be either Use RT3 RP2 - alternate	Could be either Use RP3 RT4 - alternate	Could be either Stuffy & unstable Use W, LT2, LT5	Unstable Add 4, RT1 to W, 1, 3



F	VS	S	S	F or S	F	F
Add 6 to W, 1 If still flat or unstable, reed is too soft or closed	Use RT3, W, 1/2H 1, 2, 3, 4, 5, 6, LP1. May need more open 1/2 hole to speak better	Use W, 1/2H 1, 2, 3, 4, 5, 6, LP1	Use RP3, W, 1/2H 1, 2, 3, 4, 5, 6	Could be either Unstable Add 5, 6, RP1 to 1, 2, 3, LT2	Use 1, 2, 4, 5, 6	Use 1, 3, 4, 5, 6, and either LP1 or LP2



F	F or S	S	S	F	S
Use 1, 3, 4, 5, plus either LP1 or LP2	Best: 2, LP1, 4, 5, RP1 Sharper: 2, 3, 4, 5, RT1, LP1 or LP2 Flutter: 1/2H 1, 2, 3, 4	Use W, 1/2H 1, 2, 3, 4, RP1	Use 1, 2, 3, 6	Add LP1 or LP2 to LT2, LT3, 1, 2, 3, 6	Use LT2, LT3, 1, 2, 3, 4, 5, RP1