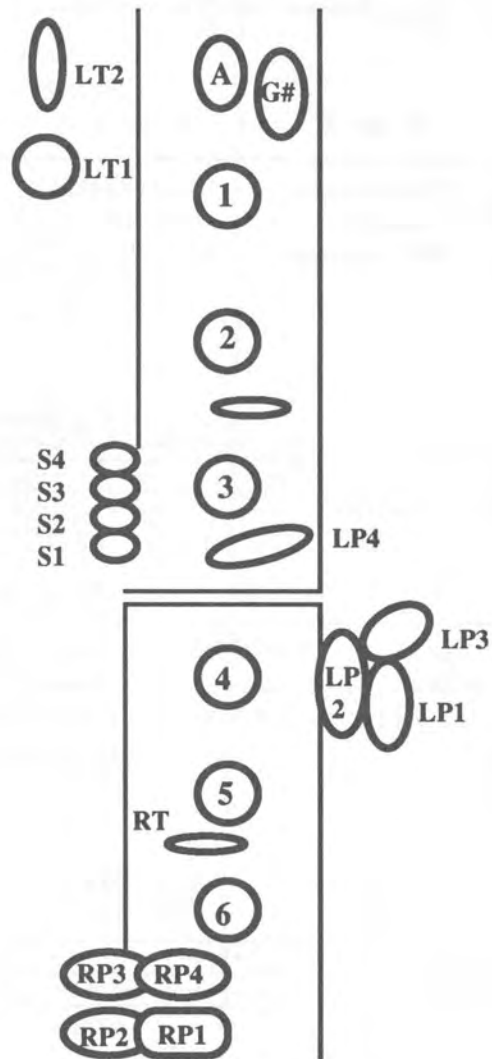


Clarinet

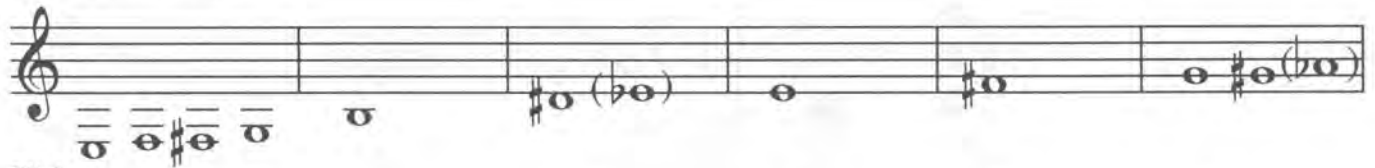


Pitch Tendencies & Adjustments

Clarinet

F = Flat
S = Sharp
V = Very
1/2H = Half hole

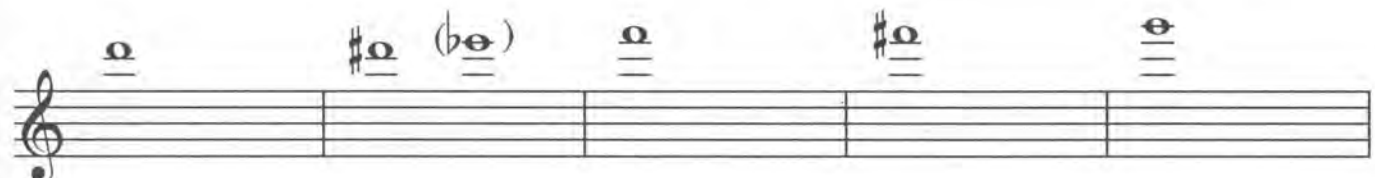
(Notes not addressed are generally acceptable)



Pitch Tendency	F	F	F	F	F	F	S
Adjustment	No	1, 2, 3, 4 & RT	Use 1 & 4	none	LT1 & S1	Add 4, 5, 6	
Fingering Adjustment							



Pitch Tendency	S	VS	S	S	S	S
Adjustment	Use 3, 4, 5, 6 and RP1	Use A & S4 or 3, 4 and RP1	None	Use A & S4 or 1 & 4	None	half hole 1
Possible shading of left hand						



Pitch Tendency	S	S	VF	VF	F
Adjustment	half hole 1	LT1, 1/2H 1, 2, 3 5 and RP4	LT1, 1, 2, 3, LP4 4, 5, 6	LT1, 1, 2, 4, 5, 6, RP4	LT1, 2, 4, 5, RP4 or LT1, 1, 4, RP4 or LT1, RP4