

Pitch Tendencies & Adjustments

Euphonium

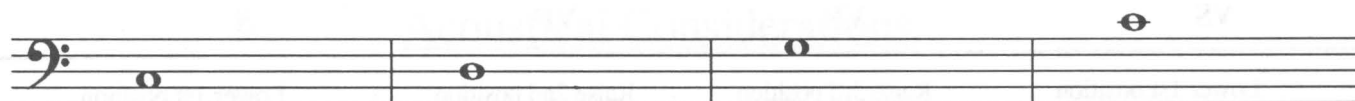
F = Flat
S = Sharp
V = Very



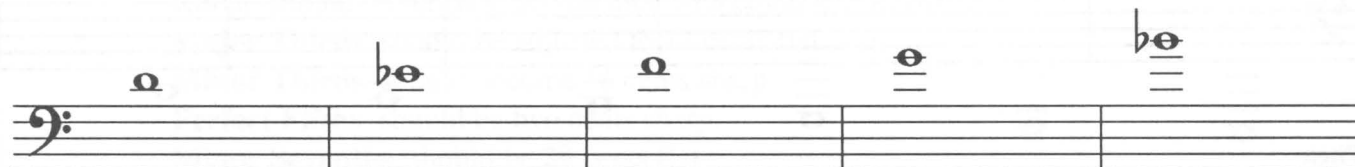
(Notes not addressed are generally acceptable)



Pitch Tendency	VVS	VS	S	VVS
Adjustment	Use 2nd and 4th valve Drop jaw	Use 4th valve	Use 3rd valve or pull 1st slide	Use 2nd & 4th valve Drop jaw



Pitch Tendency	VS	S	S	F
Adjustment	Use 4th valve	Use 3rd valve or pull 1st slide	Use 3rd valve or pull 1st slide	Use 1st & 3rd valve pull 1st valve slide or use 4th valve



Pitch Tendency	F	S	VS	VS	S
Adjustment	Use 1st & 2nd or 3rd valve	pull 1st valve slide	Use 4th valve or 1st & 3rd valve and pull 1st slide	Use 3rd valve or pull 1st slide	Use 1st valve