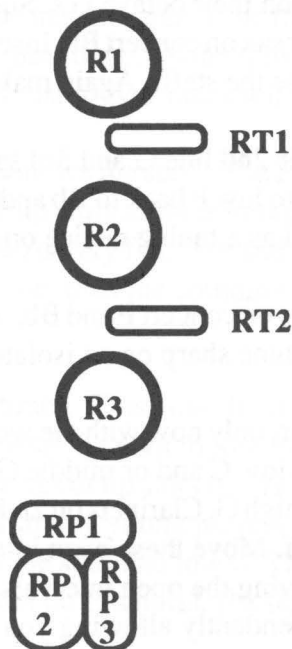
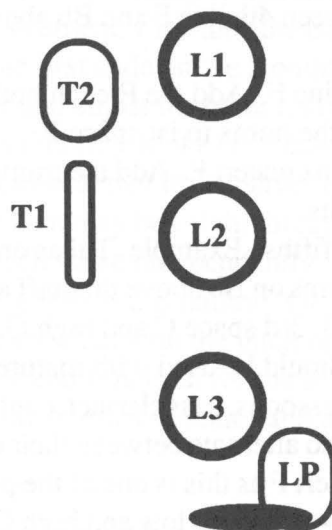


Flute



Pitch Tendencies & Adjustments

Flute

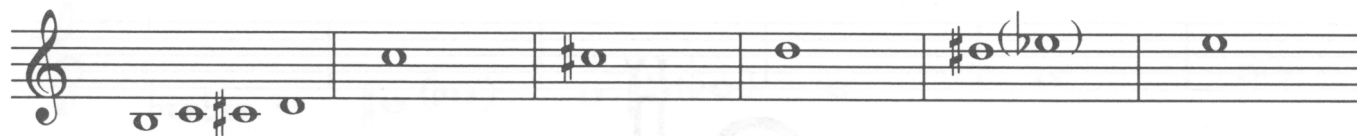
(Notes not addressed are generally acceptable)

S = sharp

F = flat

V = very

1/2H = half-hole



Pitch

Tendency

F

S

VS

F

F

F

Adjustment

Direct air flow upwards

Add 3rd finger of left hand and direct air down

Add all 3 fingers of right hand or use low C# fingering, Direct air down

Add top right hand trill key 1/2 open RT1

1/2H 3rd finger of right hand

Add lower right hand trill key RT2



F

S

VS

F

S

F

1/2H right hand 1st finger

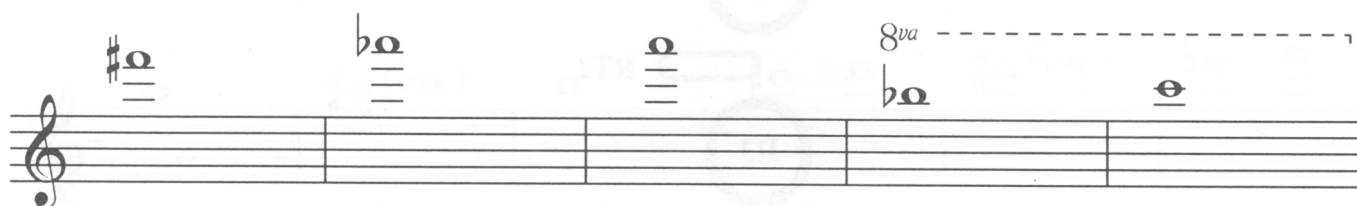
Add 3rd finger of left hand Direct air down

Add all 3 fingers of right hand, Direct air down

1/2H left hand 3rd finger

Do not use Eb key RP1

Use low C# (RP2) in place of Eb (RP1)



Note: Could be high or low depending on instrument

Note: Could be high or low depending on instrument.

S

F

S

F

S

S

F

Use right hand 2nd finger to replace right hand 3rd

Use low C# (RP2) in place of Eb (RP1)

Add 2nd & 3rd finger of right hand

Add right hand 3rd finger and use low C# (RP2) to replace Eb (RP1)

Use thumb, L1 and L3 of left hand, RT1, RT2 and RP1 of right hand. Many alternates exist. Experiment on your instrument.

Use all 4 fingers of left hand, 1st & half hole 2nd of right hand (No thumb for either)

Use all 4 of left, 1 3 and C key of right.