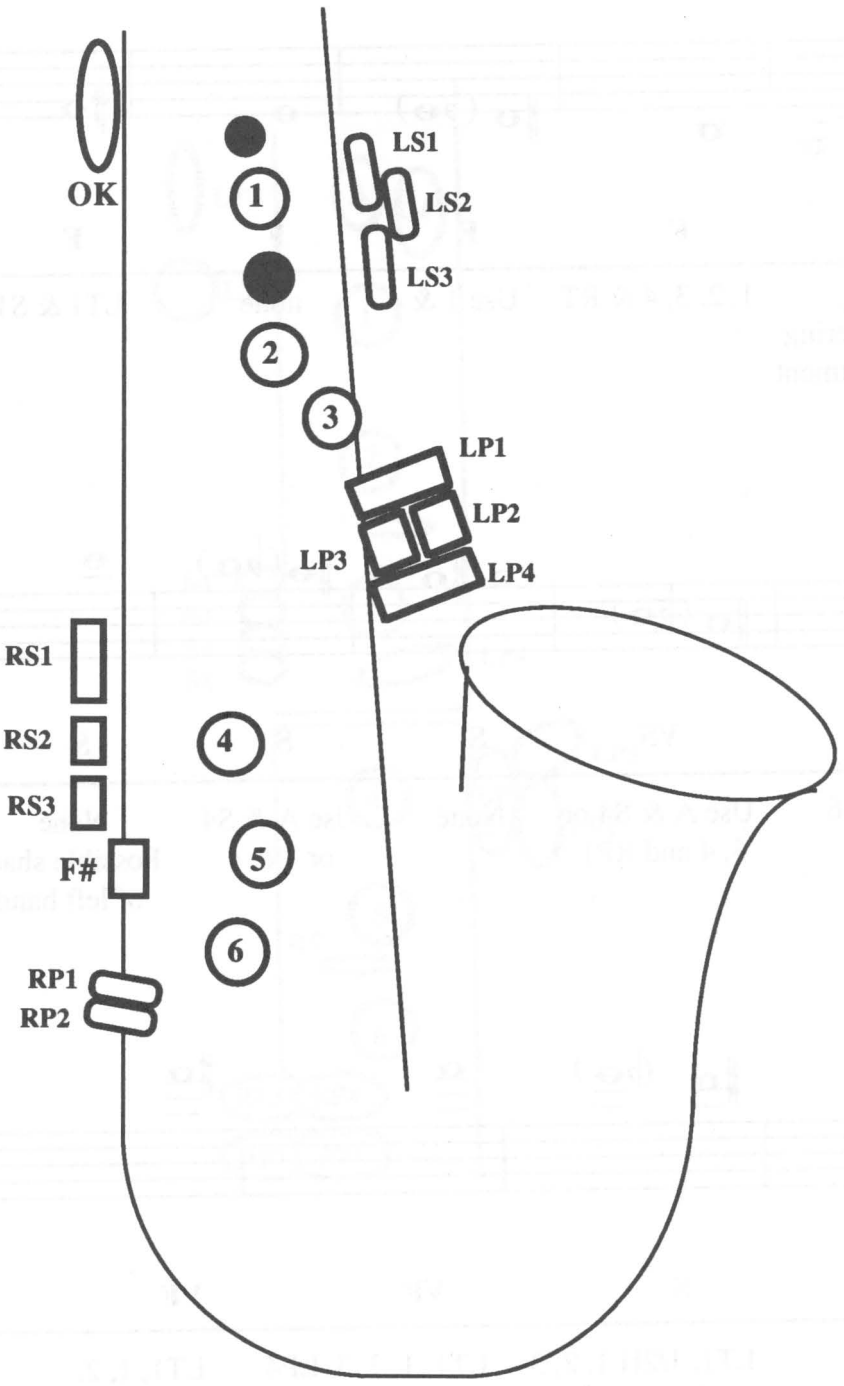


Saxophone



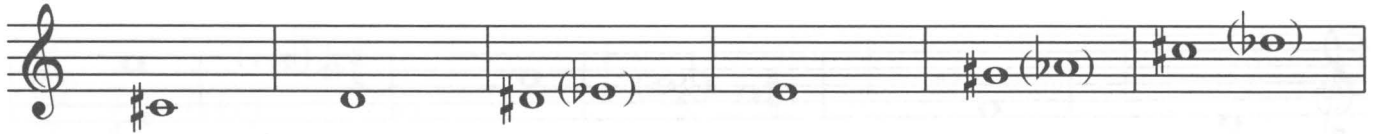
Pitch Tendencies & Adjustments

Alto Saxophone

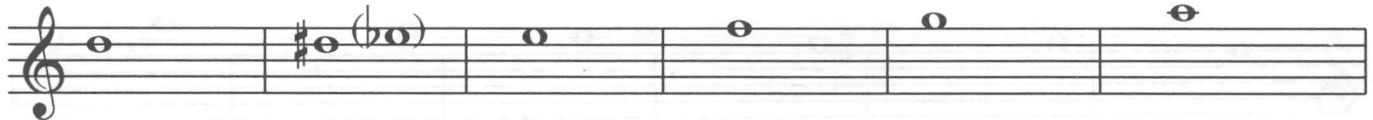
F = Flat
S = Sharp
V = Very

Note: Finger Adjustments will tend to cause timbre changes

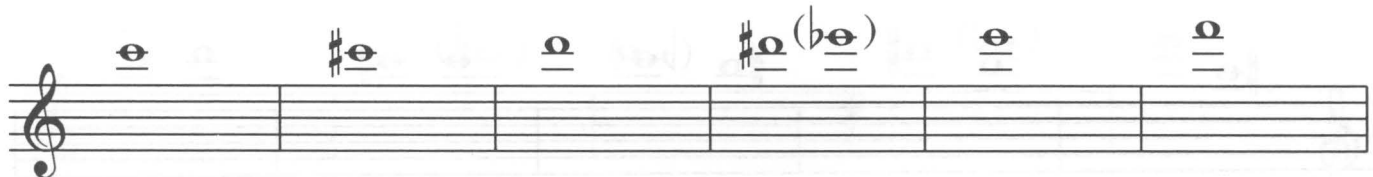
(Notes not addressed are generally acceptable)



Pitch Tendency	F	F	VF	F	F	VF
Adjustment	None	Add LP2	Add LP2	Add LP3 or LP4	Add F# key	Add RS2 or OK and 3



	S	S	VS	S	S	S
Adjustment	Add LP3	Add LP3	Add LP4	Add RP2	Add RP2	Add 6



	S	VVS	VS	VS	VVS	VS
Adjustment	Add 4, 5, 6	Use 4 & 6	Add 4, 5, 6	Close LS2	Close LS2 or Use RP1	Close LS1

Pitch Tendencies & Adjustments

Tenor Saxophone

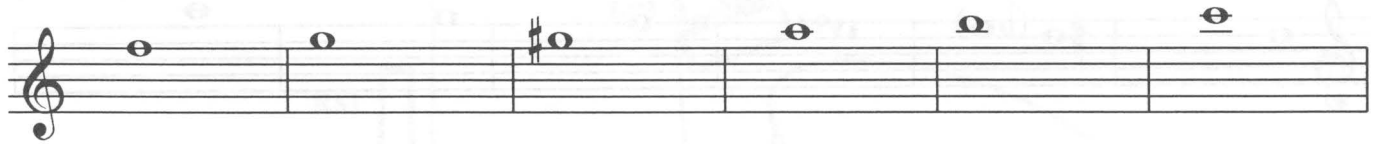
F = Flat
S = Sharp
V = Very

Note: Finger Adjustments will tend to cause timbre changes

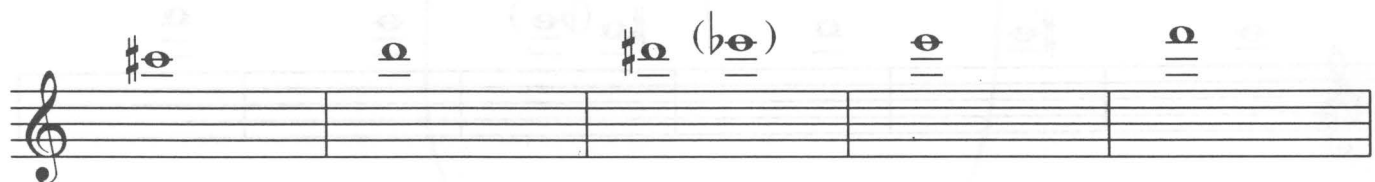
(Notes not addressed are generally acceptable)



Pitch Tendency	F	F	F	S	S	VS
Adjustment	None	Add RP1	Use LP1	Use 4, 5, 6	Use 4, 5, 6	Use LP4



	S	VS	S	S	S	VVS
	Use RP2	Use RP2	Use RP2 and LP4	Use 6	None	Use 4, 5, 6



	VVS	VS	VS	VVS	VS
	Use 4 & 6	Use 4, 5, 6	Close LS2	Close LS2 or Use RP1	Close LS1