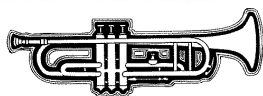


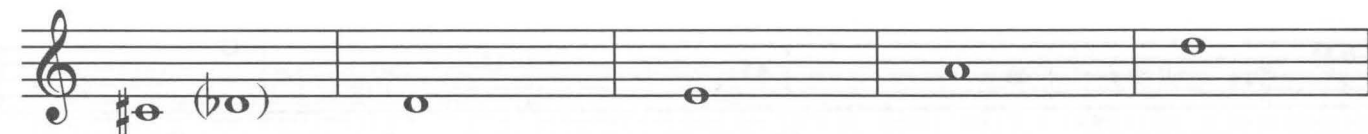
Pitch Tendencies & Adjustments

Trumpet & Baritone

F = Flat
S = Sharp
V = Very



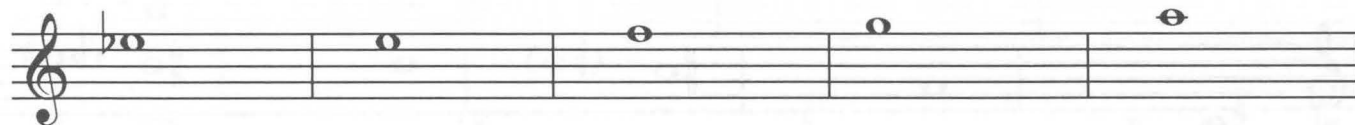
(Notes not addressed are generally acceptable)



Pitch Tendency VVS VS S S F

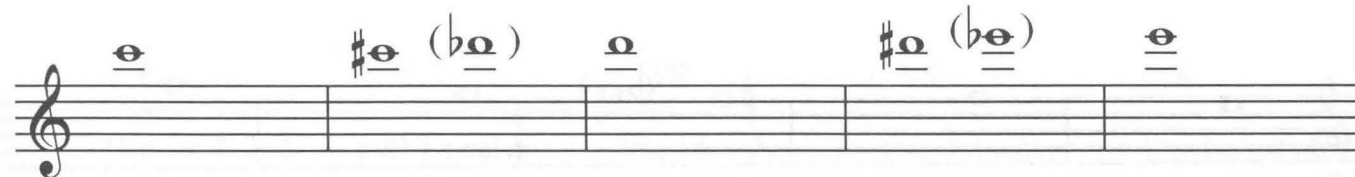
Adjustment Pull 1st or 3rd slide Pull 1st or 3rd slide Pull 1st slide or use 3rd valve Pull 1st slide or use 3rd valve Use 1st & 3rd pull either slide

Support with air; use 1st & 3rd only to match others if very flat.



F F S VS S

Use 2nd & 3rd valve Use 1st & 2nd pull 1st slide Pull 1st slide Use 1st & 3rd pull either slide Pull 1st slide



S F F F F

Use 1st valve Use 2nd valve Play open Use 2nd & 3rd Use 1st & 2nd