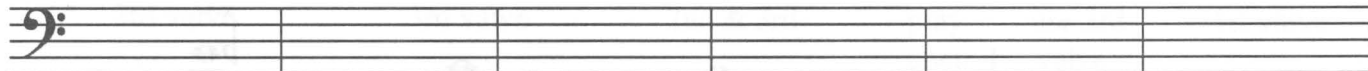




# Pitch Tendencies & Adjustments

## Tuba



**Pitch**

**Tendency**

VVS

VS

S

VVS

VS

S

**Adjustment**

Use 2nd & 4th valve  
Drop jaw

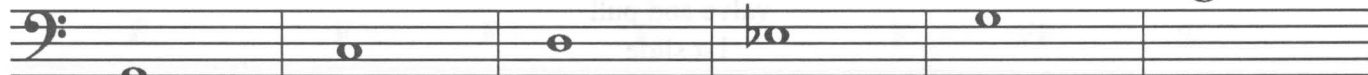
Use 4th valve

Use 3rd valve  
or pull 1st valve  
slide

Use 2nd & 4th  
Drop jaw

Use 4th valve

Use 3rd valve  
or pull 1st slide



S

F

F

S

VS

F

Use 3rd valve  
or pull 1st slide

Use 1st & 3rd  
or 4th valve

Use 1st and 2nd

Pull 1st slide

Use 3rd valve

Play open